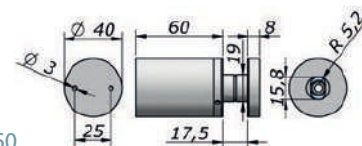
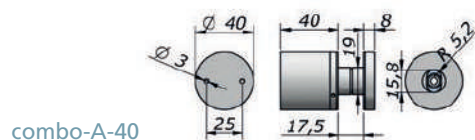
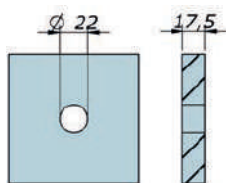


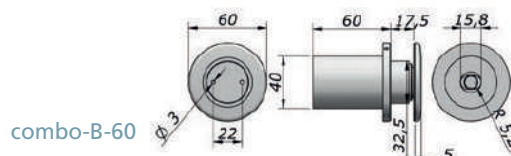
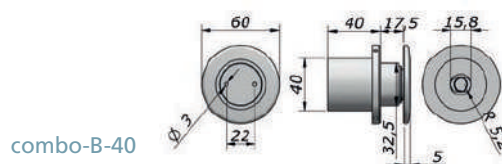
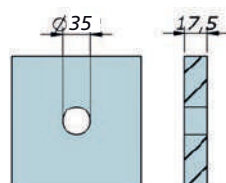
**combo A**



Vite di fissaggio a muro con distanziale h 40/60 borchia piatta diam. 40  
Fixed screw with flat ring diam. 40 with wall fixing, spacer h. 40/60

V-COMBO-A-40 V-COMBO-A-60

**combo B**



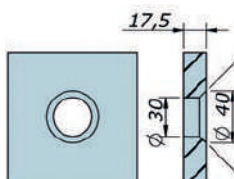
Vite di fissaggio a muro con distanziale h 40/60 borchia piatta diam. 60  
Fixed screw with flat ring diam. 60 with wall fixing, spacer h. 40/60

V-COMBO-B-40 V-COMBO-B-60

**ACCESSORI PER PARAPETTI**

**BALUSTRADES ACCESSORIES**

**combo C**

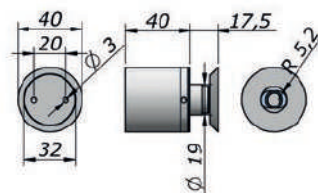


Vite di fissaggio a muro con distanziale h 40/60 borchia svasata  
Fixed screw with countersunk ring with wall fixing, spacer h. 40/60

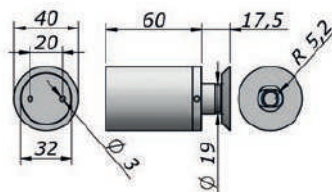
V-COMBO-C-40

V-COMBO-C-60

combo-C-40



combo-C-60

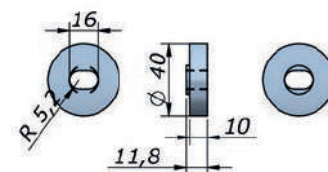


**combo D**

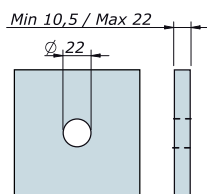


Distanziale aggiuntivo per serie Combo  
Additional spacer for Combo series

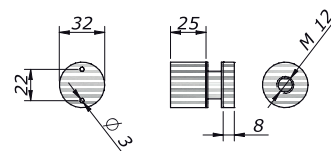
V-COMBO-D



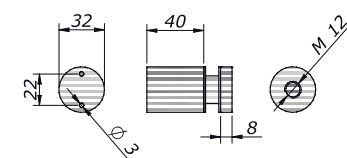
**combo E**



combo-E-25



combo-E-40

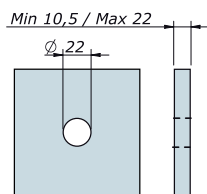


Vite di fissaggio a muro con distanziale h 25/40 borchia piatta diam. 32  
Fixed screw with flat ring diam. 32 with wall fixing, spacer h. 24/40

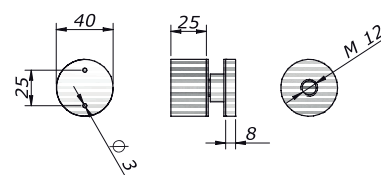
V-COMBO-E-25

V-COMBO-E-40

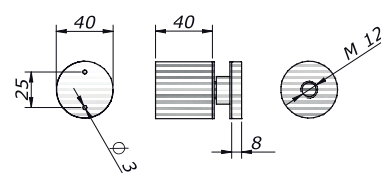
**combo F**



combo-F-25



combo-F-40



Vite di fissaggio a muro con distanziale h 25/40 borchia piatta diam. 40  
Fixed screw with flat ring diam. 40 with wall fixing, spacer h. 25/40

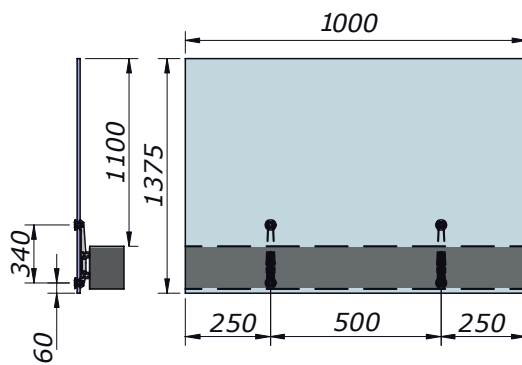
V-COMBO-F-25

V-COMBO-F-40

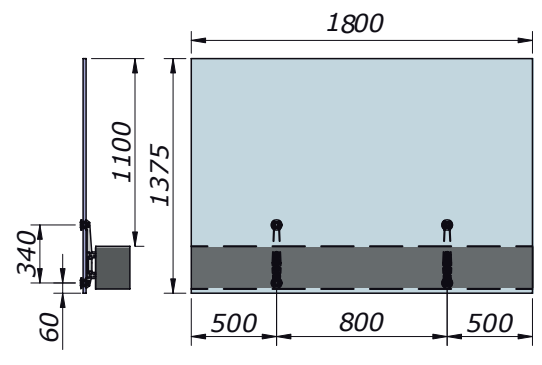
**ACCESSORI PER PARAPETTI**

**BALUSTRADES ACCESSORIES**

**sirio A**

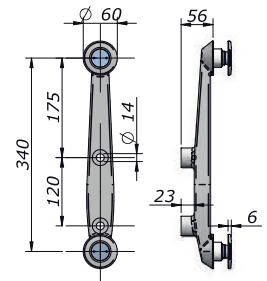
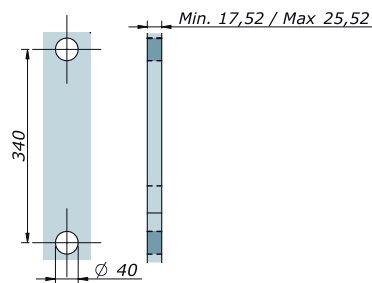


portata / load  
kg 200



portata / load  
kg 100

**sirio A**

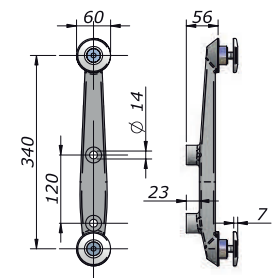
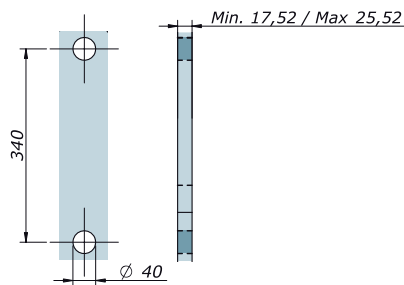


Supporto per parapetti con fissaggio a parete in acciaio inox  
Stainless steel balustrade supports for wall fastening

V-SIRIO-A

portata / load capacity  
kN/m 200

**Sirio B**

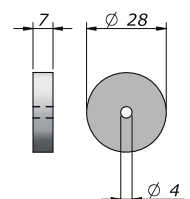


Supporto per parapetti con fissaggio a parete in alluminio  
Aluminum balustrade supports for wall fastening

V-SIRIO-B

portata / load capacity  
kN/m 100

**AC 11**



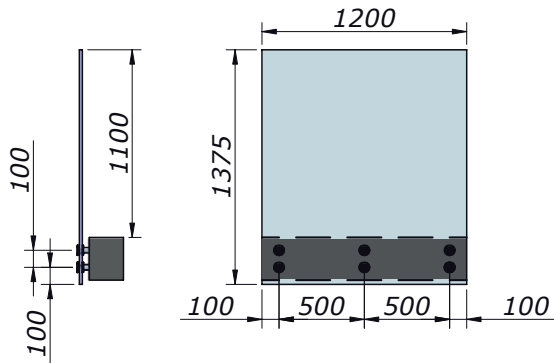
Tappo di copertura per Art. Sirio A/B  
Cover cap for Art. Sirio A/B

V-AC-11

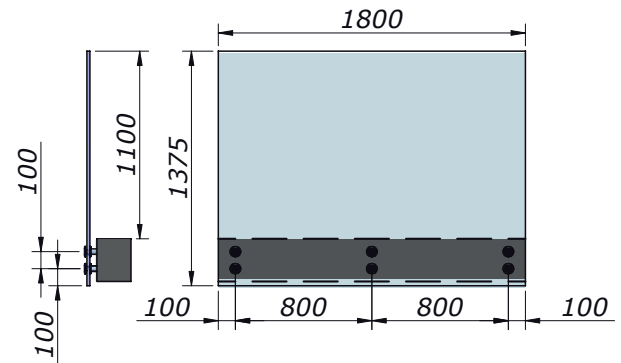
**ACCESSORI PER PARAPETTI**

**BALUSTRADES ACCESSORIES**

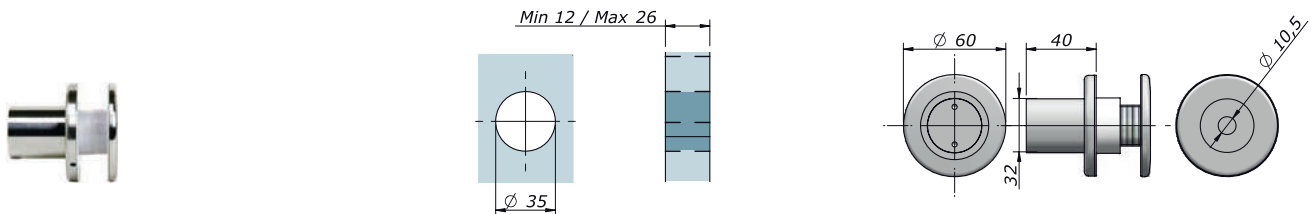
era P\_portata / load resistance 2 kN/m



era P\_portata / load resistance 1 kN/m



**era P**

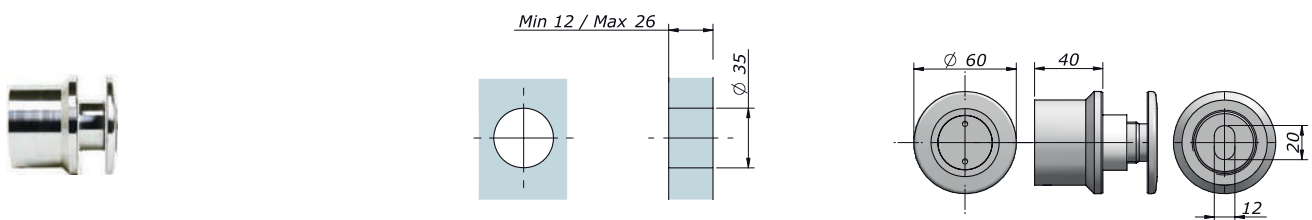


Vite fissa per fissaggio a parete con distanziale h.40 mm  
Wall fastening fixed screw with 40 mm spacer

V-ERA-P

portata / load  
kg 300

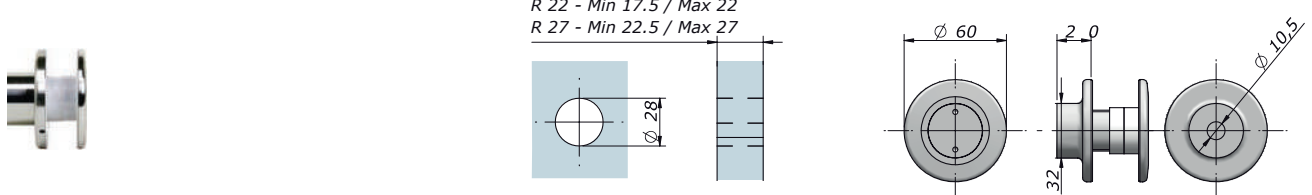
**era Q**



Vite fissa per fissaggio regolabile a parete  
Wall adjustable fastening fixed screw

V-ERA-Q

**era R 15 / era R 22 / era R 27**



R 15 - Min 10.5 / Max 15  
R 22 - Min 17.5 / Max 22  
R 27 - Min 22.5 / Max 27

Vite fissa per fissaggio a parete con distanziale h.20 mm  
Wall fastening fixed screw with 20 mm spacer

spessore / glass max 15 mm

spessore / glass max 22 mm

spessore / glass max 27 mm

portata / load  
kg 300

V-ERA-R-15

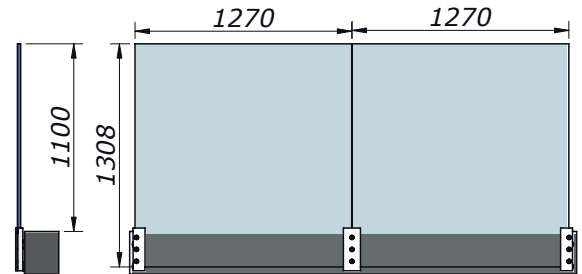
V-ERA-R-22

V-ERA-R-27

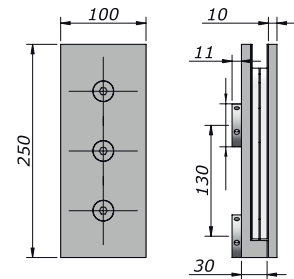
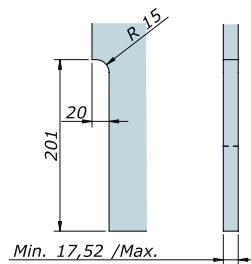
**ACCESSORI PER PARAPETTI**

**BALUSTRADES ACCESSORIES**

**sirio C / D**



**sirio C**

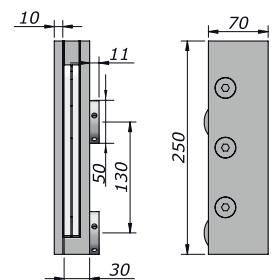
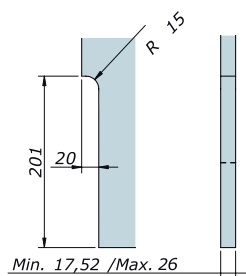


**Morsetto di supporto centrale per parapetti**  
Balustrade central clamp

argento/silver      crom. sat/chro. mat  
V-SIRIO-C-A      V-SIRIO-C-I

portata / load capacity  
kN/m 100

**sirio D**

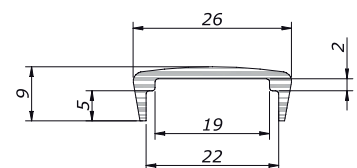
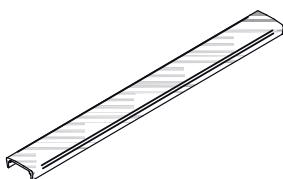


**Morsetto di supporto terminale per parapetti**  
Balustrade lateral clamp

argento/silver      crom. sat/chro. mat  
V-SIRIO-D-A-DX      V-SIRIO-D-A-SX      V-SIRIO-D-I-DX      V-SIRIO-D-I-SX

portata / load capacity  
kN/m 100

**AC 25**



**Profilo corrimano**  
Hand rails profile

argento / silver      argento / silver  
lungh. / length 2500      lungh. / length 5000  
V-AC-25-A-250      V-AC-25-A-500

cromato satinato / chrome mat      cromato satinato / chrome mat  
lungh. / length 2500      lungh. / length 5000  
V-AC-25-I-250

cromato satinato / chrome mat  
lungh. / length 5000  
V-AC-25-I-500

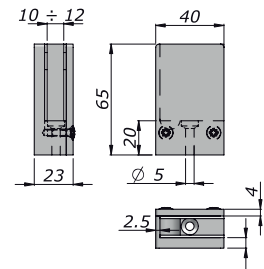
**ACCESSORI PER PARAPETTI**

**BALUSTRADES ACCESSORIES**

**art. 363**



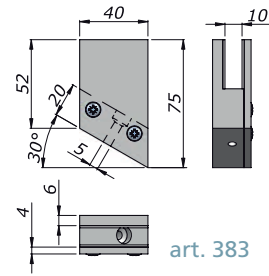
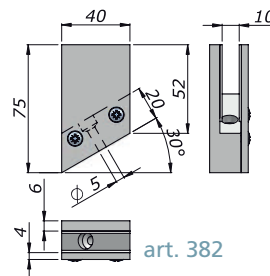
- \* N-0363-A: max 12 mm
- N-0363-A-14: max 14 mm
- N-0363-A-18: max 18 mm
- N-0363-A-20: max 20 mm



**Morsetto angolare per parapetti senza tacca**  
Balustrade corner clamp without cut-out

argento/silver	bronzo/bronze	oro/gold	nero/black	verniciato/powder	cromato/chrome	oro luc./bright gold	crom.sat/chro. mat
N-0363-A *	N-0363-B	N-0363-O	N-0363-N	N-0363-V	N-0363-C	N-0363-L	N-0363-I
N-0363-A-14 *	-	-	-	-	N-0363-C-14	-	N-0363-I-14
N-0363-A-18 *	-	-	-	-	N-0363-C-18	-	N-0363-I-18
N-0363-A-20 *	-	-	-	-	N-0363-C-20	-	N-0363-I-20

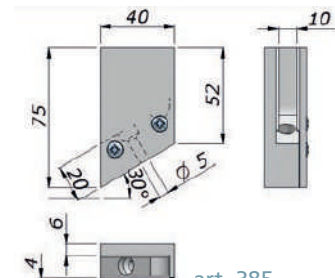
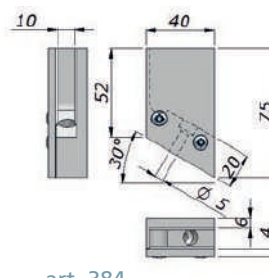
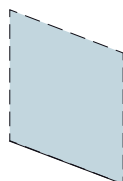
**art. 382 / 383**



**Morsetto per parapetti inclinato**  
Balustrade oblique clamp

argento/silver	bronzo/bronze	oro/gold	nero/black	verniciato/powder	cromato/chrome	oro luc./bright gold	crom.sat/chro. mat
N-0382-A	N-0382-B	N-0382-O	N-0382-N	N-0382-V	N-0382-C	N-0382-L	N-0382-I
N-0383-A	N-0383-B	N-0383-O	N-0383-N	N-0383-V	N-0383-C	N-0383-L	N-0383-I

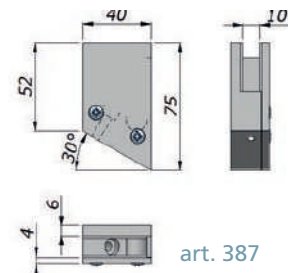
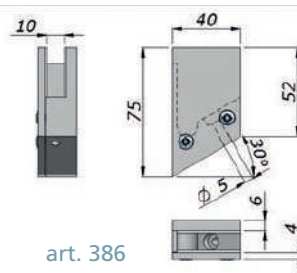
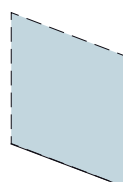
**art. 384 / 385**



**Morsetto angolare inclinato per parapetti**  
Balustrade corner oblique clamp

argento/silver	bronzo/bronze	oro/gold	nero/black	verniciato/powder	cromato/chrome	oro luc./bright gold	crom.sat/chro. mat
N-0384-A	N-0384-B	N-0384-O	N-0384-N	N-0384-V	N-0384-C	N-0384-L	N-0384-I
N-0385-A	N-0385-B	N-0385-O	N-0385-N	N-0385-V	N-0385-C	N-0385-L	N-0385-I

**art. 386 / 387**



**Morsetto angolare inclinato per parapetti**  
Balustrade corner oblique clamp

argento/silver	bronzo/bronze	oro/gold	nero/black	verniciato/powder	cromato/chrome	oro luc./bright gold	crom.sat/chro. mat
N-0386-A	N-0386-B	N-0386-O	N-0386-N	N-0386-V	N-0386-C	N-0386-L	N-0386-I
N-0387-A	N-0387-B	N-0387-O	N-0387-N	N-0387-V	N-0387-C	N-0387-L	N-0387-I



**ACCESSORI PER PARAPETTI**

**BALUSTRADES ACCESSORIES**

articolo article	codice code	finitura finish	
	N-0361-	A	
		B/O/N/V	
		C	
		L/I	
N-0361-	A	14	
	C		
	I		
N-0361-	A	18	
	C		
	I		
N-0361-	A	20	
	C		
	I		

14 = per sp. / for max. 14 mm  
18 = per sp. / for max. 18 mm  
20 = per sp. / for max. 21,52 mm

**art. 361**

Morsetto per parapetti senza tacca  
Balustrade clamp without cut out

articolo article	codice code	finitura finish	
	N-0362-	A	
		B/O/N/V	
		C	
		L/I	
N-0362-	A	14	
	C		
	I		
N-0362-	A	18	
	C		
	I		
N-0362-	A	20	
	C		
	I		

14 = per sp. / for max. 14 mm  
18 = per sp. / for max. 18 mm  
20 = per sp. / for max. 21,52 mm

**art. 362**

Morsetto angolare per parapetti senza tacca  
Balustrade corner clamp without cut out

articolo article	codice code	finitura finish	
	N-0363-	A	
		B/O/N/V	
		C	
		L/I	
N-0363-	A	14	
	C		
	I		
N-0363-	A	18	
	C		
	I		
N-0363-	A	20	
	C		
	I		

14 = per sp. / for max. 14 mm  
18 = per sp. / for max. 18 mm  
20 = per sp. / for max. 21,52 mm

**art. 363**

Morsetto angolare per parapetti senza tacca  
Balustrade corner clamp without cut out

articolo article	codice code	finitura finish	
	N-0370-	A	
		B/O/N/V	
		C	
		L/I	

**art. 370**

Morsetto per parapetti  
Balustrade clamp

articolo article	codice code	finitura finish	
	N-0380-	A	
		B/O/N/V	
		C	
		L/I	

**art. 380**

Morsetto per parapetti inclinato  
Balustrade oblique clamp

articolo article	codice code	finitura finish	
	N-0381-	A	
		B/O/N/V	
		C	
		L/I	

**art. 381**

Morsetto per parapetti inclinato  
Balustrade oblique clamp

articolo article	codice code	finitura finish	
	N-0382-	A	
		B/O/N/V	
		C	
		L/I	

**art. 382**

Morsetto per parapetti inclinato  
Balustrade oblique clamp

articolo article	codice code	finitura finish	
	N-0383-	A	
		B/O/N/V	
		C	
		L/I	

**art. 383**

Morsetto per parapetti inclinato  
Balustrade oblique clamp

articolo article	codice code	finitura finish	
	N-0384-	A	
		B/O/N/V	
		C	
		L/I	

**art. 384**

Morsetto angolare inclinato per parapetti  
Balustrade corner oblique clamp

articolo article	codice code	finitura finish	
	N-0385-	A	
		B/O/N/V	
		C	
		L/I	

**art. 385**

Morsetto angolare inclinato per parapetti  
Balustrade corner oblique clamp

articolo article	codice code	finitura finish	
	N-0386-	A	
		B/O/N/V	
		C	
		L/I	

**art. 386**

Morsetto angolare inclinato per parapetti  
Balustrade corner oblique clamp

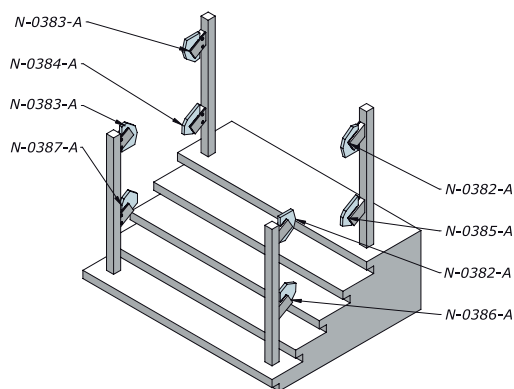
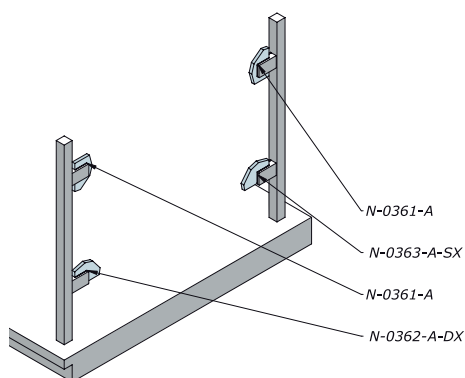
articolo article	codice code	finitura finish	
	N-0387-	A	
		B/O/N/V	
		C	
		L/I	

**art. 387**

Morsetto angolare inclinato per parapetti  
Balustrade corner oblique clamp

**ACCESSORI PER PARAPETTI**

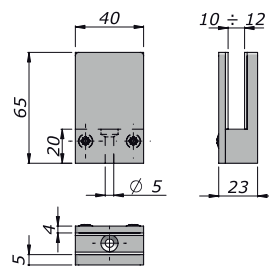
**BALUSTRADES ACCESSORIES**



**art. 361**



\*  
N-0361-A: max 12 mm  
N-0361-A-14: max 14 mm  
N-0361-A-18: max 18 mm  
N-0361-A-20: max 20 mm



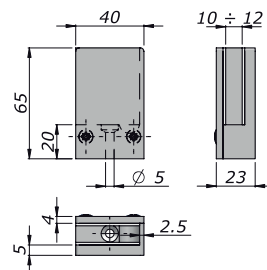
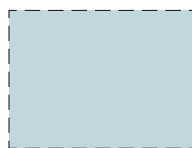
**Morsetto per parapetti senza tacca**  
Balustrade clamp without cut-out

argento/silver	bronzo/bronze	oro/gold	nero/black	verniciato/powder	cromato/chrome	oro luc./bright gold	crom.sat/chro. mat
N-0361-A *	N-0361-B	N-0361-O	N-0361-N	N-0361-V	N-0361-C	N-0361-L	N-0361-I
N-0361-A-14 *	-	-	-	-	N-0361-C-14	-	N-0361-I-14
N-0361-A-18 *	-	-	-	-	N-0361-C-18	-	N-0361-I-18
N-0361-A-20 *	-	-	-	-	N-0361-C-20	-	N-0361-I-20

**art. 362**



\*  
N-0362-A: max 12 mm  
N-0362-A-14: max 14 mm  
N-0362-A-18: max 18 mm  
N-0362-A-20: max 20 mm



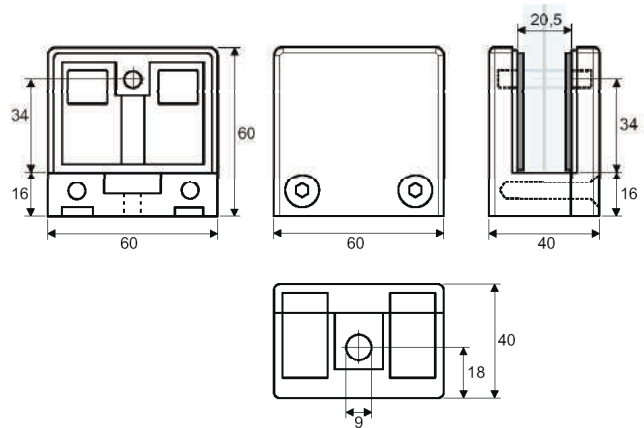
**Morsetto angolare per parapetti senza tacca**  
Balustrade corner clamp without cut-out

argento/silver	bronzo/bronze	oro/gold	nero/black	verniciato/powder	cromato/chrome	oro luc./bright gold	crom.sat/chro. mat
N-0362-A *	N-0362-B	N-0362-O	N-0362-N	N-0362-V	N-0362-C	N-0362-L	N-0362-I
N-0362-A-14 *	-	-	-	-	N-0362-C-14	-	N-0362-I-14
N-0362-A-18 *	-	-	-	-	N-0362-C-18	-	N-0362-I-18
N-0362-A-20 *	-	-	-	-	N-0362-C-20	-	N-0362-I-20

**FISSAGGI E MORSETTI**

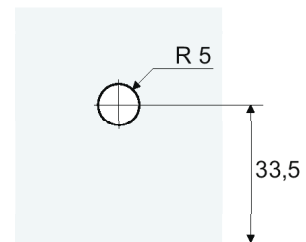
**FASTENING ELEMENTS**

**HC01**

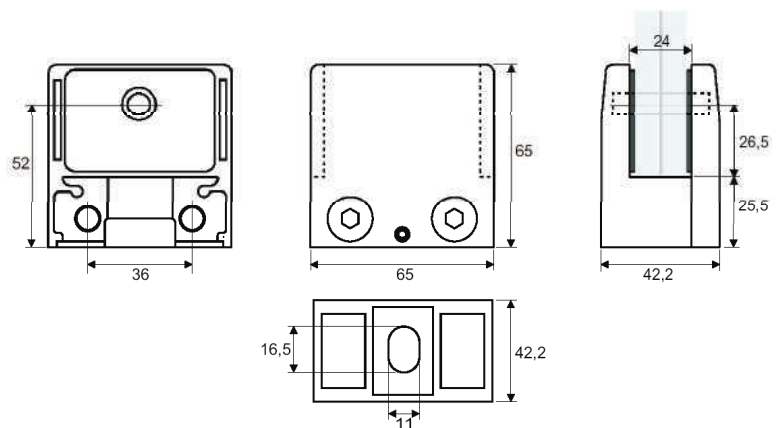


Morsetto per vetri stratificati in forte spessore  
Calibrato per vetri mm 13,52 e 17,52 mediante set di guarnizioni specifiche (comunicare all'ordine lo spessore vetro utilizzato)  
Perno di sicurezza rimovibile compreso  
Realizzato in fusione di acciaio inox Aisi 304

High thickness laminated glass clamp  
Exact mm 13,52 and 17,52 glass thickness fitting with set of gaskets (specify glass thickness in the order)  
Removable safety pin included  
Diecast Aisi 304 stainless steel made

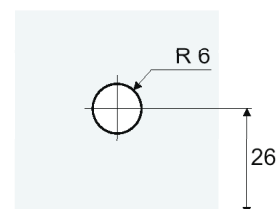


**HC10**



Morsetto per vetri stratificati in forte spessore  
Calibrato per vetri mm 17,52 e 21,52 mediante set di guarnizioni specifiche (comunicare all'ordine lo spessore vetro utilizzato)  
Perno di sicurezza rimovibile compreso  
Basetta di appoggio opzionale acquistabile a parte  
Realizzato in fusione di acciaio inox Aisi 316

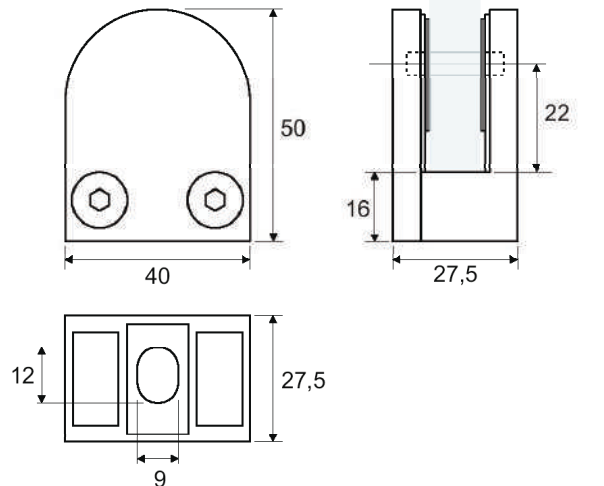
High thickness laminated glass clamp  
Exact mm 17,52 and 21,52 glass thickness fitting with set of gaskets (specify glass thickness in the order)  
Removable safety pin included  
Support plate available extra  
Diecast Aisi 316 stainless steel made



**CERNIERE E COMPONENTI PER BOX DOCCIA**

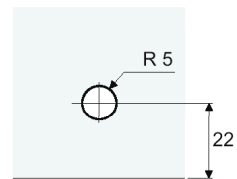
**SWOWNER ROOMS HINGES AND FITTINGS**

**A1000**

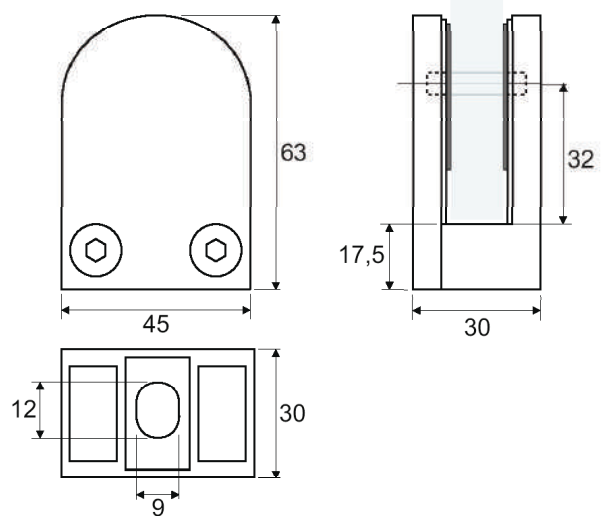


Morsetto per vetro monolitico e stratificato  
Perno di sicurezza rimovibile compreso  
Realizzato in acciaio inox Aisi 304

Clamp for solid and laminated glasses  
Removable safety pin included  
Diecast Aisi 304 stainless steel manufacturing

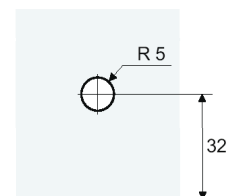
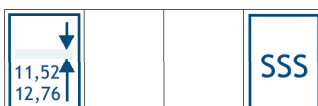


**A1200**



Morsetto per vetro monolitico e stratificato  
Calibrato per vetri mm 11,52, 12 e 12,76 mediante set di guarnizioni specifiche (comunicare all'ordine lo spessore vetro utilizzato)  
Perno di sicurezza rimovibile compreso  
Realizzato in fusione di acciaio inox Aisi 304

Clamp for solid and laminated glasses  
Exact mm 11,52, 12 and 12,76 glass thickness fitting with set of gaskets (specify glass thickness in the order)  
Removable safety pin included  
Diecast Aisi 304 stainless steel manufacturing



## Profilo per parapetti Sirio F Profile for balustrade Sirio F



### Sirio F - profilo di fissaggio parapetti

Facile e veloce da installare.

La regolazione dell'allineamento lastre avviene dal lato superiore con chiavi a brugola standard. Le lastre possono essere inserite e riposizionate agevolmente.

Testato fino a 3kN, per spessori 8+8 o 10+10.

Possibilità di installazione sopra pavimento, incassato o laterale al pavimento.

Finiture standard sempre disponibili con anodizzazione 20 micron argento e simil inox, a richiesta altre finiture e verniciatura Ral.

Il profilo portante viene fornito con lung. mm 2500, i carter sono disponibili con lung. mm 2500 e 5000. Altre dimensioni e taglio a misura sono disponibili a richiesta.

### Sirio F - railing fixing profile

Quick and easy to install. Adjustment of glass alignment from the upper side with standard allen keys. Glass can be installed and repositioned easily.

Tested up to 3kN, for 8+8 or 10+10 mm glass.

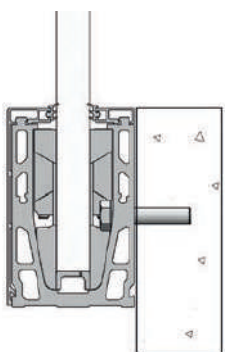
Available for installation above the floor, built-in the floor or with side fixing.

Standard finishes always available with 20 micron anodizing silver and mat stainless steel, on demand other anodizing finishes and Ral painting are available.

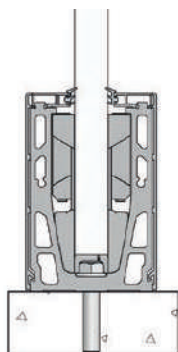
U-channel base profile is supplied with length. 2500 mm, covers are available with length. 2500 and 5000 mm. Other dimensions and cut to size are available on request.



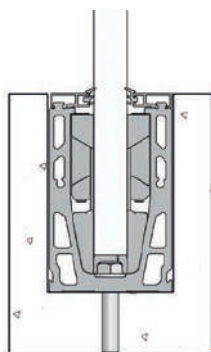
varie possibilità di installazione / various kind of installation



fissaggio a parete  
wall fastening



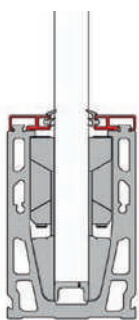
sopra pavimento  
on the floor



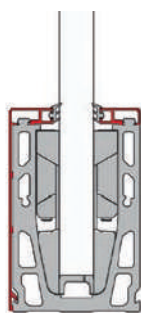
incassato a pavimento  
embedded in the floor



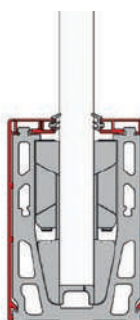
installazione con o senza carter / installation with or without cover



doppio carter superiore  
top double cover



carter laterale e superiore  
side and top cover



doppio carter laterale  
side double cover

I test di carico orizzontale sono stati effettuati in collaborazione con ITC- CNR (istituto di certificazione abilitato e riconosciuto a livello internazionale). Le prove d'impatto e di spinta garantiscono carichi fino a 2 kN/m.

The horizontal loading tests have been carried out in cooperation with ITC\_CNR (institute of certification internationally recognized). The crash and pressure tests guarantee loads up to 2 kN/m.



**Tipologie installazioni / Possible installations**

Il profilo portante viene fornito pre-forato per fissaggio inferiore o laterale a seconda della tipologia di installazione

Supporting profile is pre-drilled for bottom or lateral fixing according to the type of installation

Sopra pavimento  
Over the floor

incassato a pavimento  
embedded in the floor

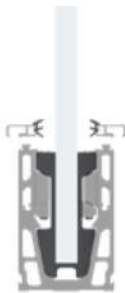
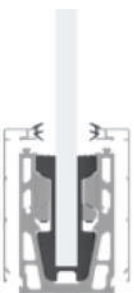
fissaggio laterale  
lateral fastening



#1	#2	#3
fissaggio sopra pavimento / over the floor fastening	incassato a pavimento / embedded in the floor	fissaggio laterale / lateral fastening
No. 01 Art. Sirio F	No. 01 Art. Sirio F	No. 01 Art. Sirio H
No. 01 Art. AC 40 / AC41	No. 01 Art. AC 40 / AC41	No. 01 Art. AC 40 / AC41
No. 02 Art. AC 44	No. 02 Art. AC 43	No. 01 Art. AC 43
		No. 01 Art. AC 44

I carter di copertura possono essere combinati a seconda della tipologia di installazione

Covers profiles can be combined according to the type of installation

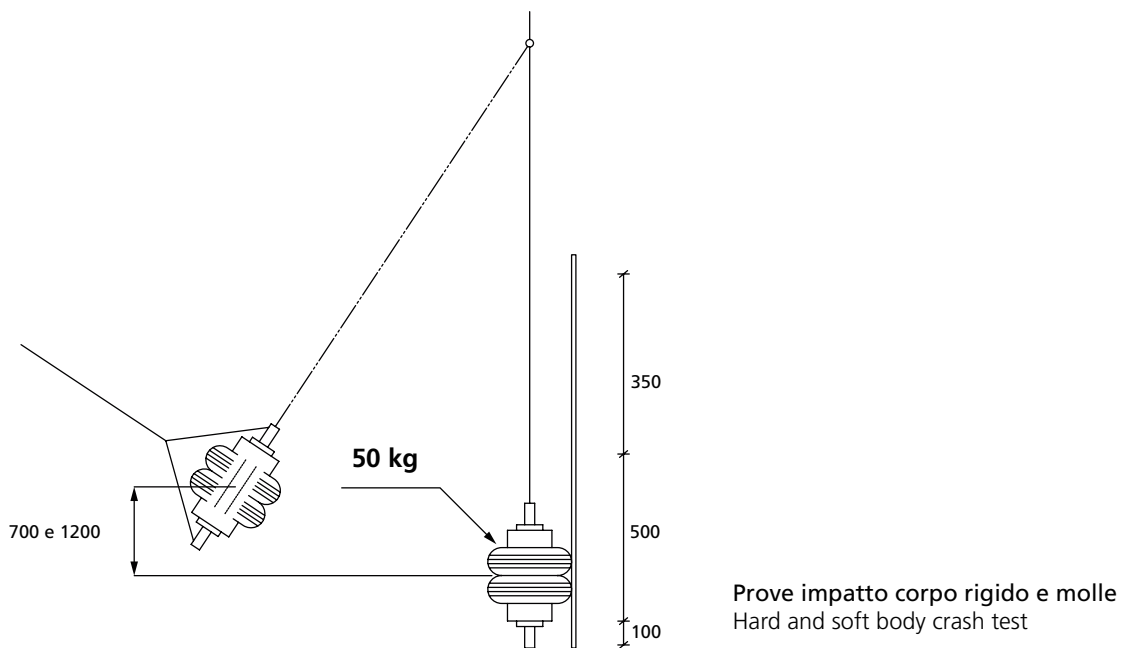
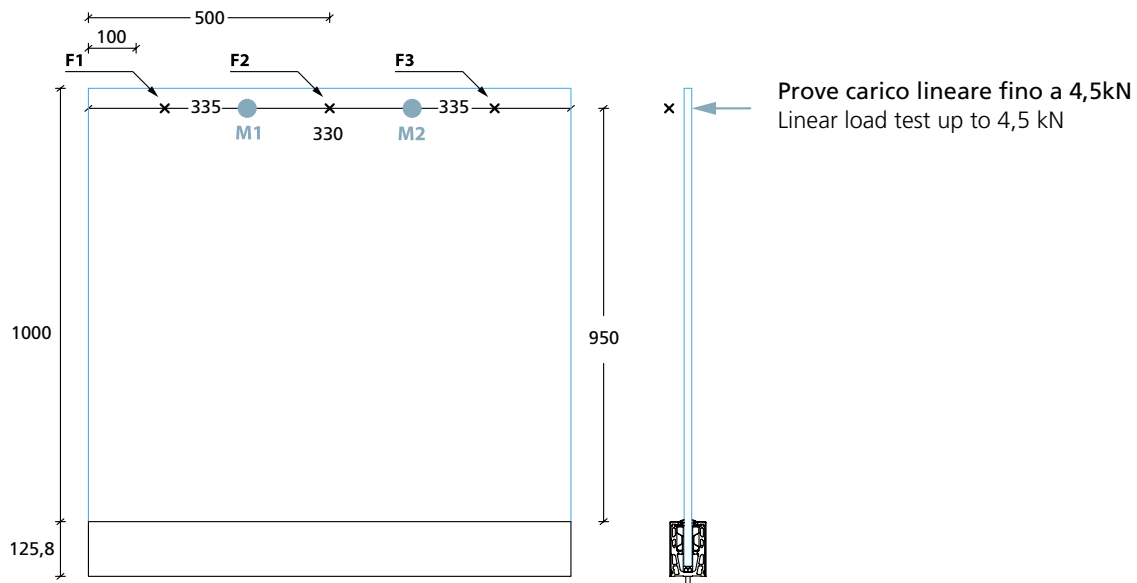


doppio carter laterale / double side cover

doppio carter superiore / double top cover

carter laterale + superiore / side + top cover

| Test di resistenza / Test of resistance



**Test di resistenza a carichi lineari e all'impatto da corpo duro e molle**

I test sono stati effettuati considerando i seguenti riferimenti normativi:

**NTC 2018**

Definizione dei carichi in base alla destinazione d'uso

**UNI 11678/2017**

Elementi di tamponamento in vetro aventi funzione anticaduta, resistenza al carico statico lineare e al carico dinamico e relativi metodi di prova

**UNI7697/2015**

Criteri di sicurezza delle applicazioni vetrarie

**Test of resistance to linear loads and impacts load from hard and soft body**

The tests were carried out considering the following normative references:

**NTC 2018**

Loads according to intended use definition

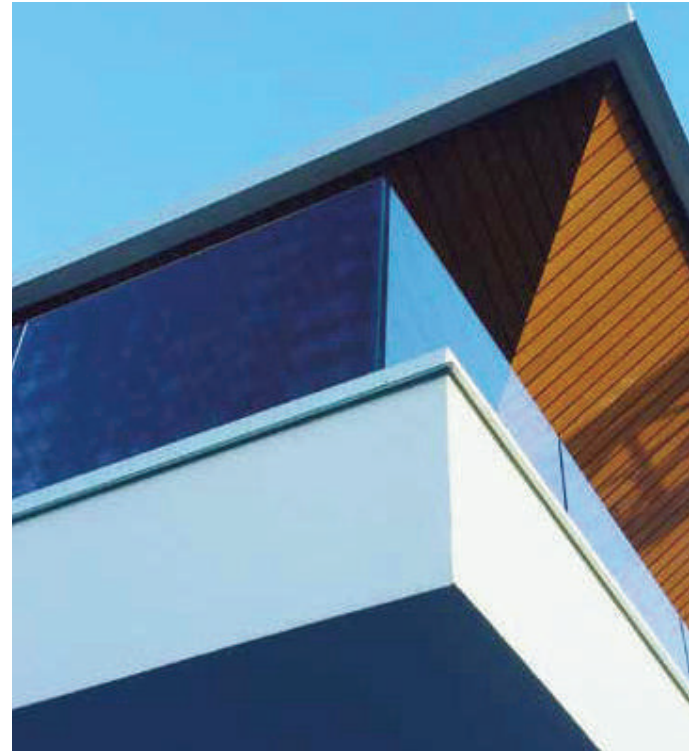
**UNI 11678/2017**

Glass parapets with anti-fall function, resistance to the linear static load and to the dynamic load and relative test methods

**UNI7697 / 2015**

Safety criteria for glass applications





Tipologia Applicazione	Ambienti privati non aperti al pubblico	Residenziale e Uffici	Ambienti pubblici suscettibili di affollamento	Ambienti suscettibili di affollamento (Cat. C3, C4 e C5)
Type of installation	Private areas and public places not open to public	Residential and Offices	Public areas with crowding	Public areas with crowding (Cat. C3, C4 e C5)
SLE (Stato limite di esercizio) serviceability limit states (SLS)	<b>1 kN</b>	<b>2 kN</b>	<b>2 kN</b>	<b>3 kN</b>
SLU (Stato limite ultimo) ultimate limit state (ULS)	<b>1,5 kN</b>	<b>3,5 kN</b>	<b>3,5 kN</b>	<b>4,5 kN</b>
Tipologia di vetro Glass typology	8+8 (pvb)	8+8 (SG) 8+8 (DG41) 10+10 (PVB)	8+8 (SG) 8+8 (DG41) 10+10 (PVB)	10+10 (SG) 10+10 (DG41)

**NB**

- Carichi verificati ad h. 1200 dalla base profilo  
- In assenza di intercalare plastico rigido le lastre vanno composte con una lastra temperata e una lastra indurita, la lastra indurita va posizionata dal lato della spinta  
- Negli altri paesi europei vengono richiesti differenti di esercizio e le flessioni massime ammissibili sono inferiori, i test richiesti sono pressoché gli stessi va pertanto verificata la categoria di appartenenza in base ai risultati dei test.

**NB**

- Loads were checked at 1200 from the profile base  
- When glass is without rigid plastic interlayer, the glass must be composed by one tempered glass sheet and one hardened glass sheet, hardened glass must be positioned on the thrust side  
- Other European countries require different limit load and maximum deflection are lower, test required are almost the same, therefore the category to which they belong must be verified based on the test results.

**Tasselli consigliati / Suggested screw anchors**

Tipologia Installazione	Resistenza a carico richiesta sul parapetto	TASSELLO CONSIGLIATO	Resistenza a carico di trazione kN	Resistenza a carico di taglio kN
Type of installation	Load resistance requested for balustrade	SUGGESTED SCREW ANCOR	Traction force resistance kN	Cutting resistance load kN
Sirio F	1,5 kN	Fischer ULTRACUT FBS II M8 X 70 20/5 US TX	2,90	4,30
Sirio F	2 kN	Fischer ULTRACUT FBS II M10 X 100 45/35/15 US	5,70	12,50
Sirio H	2 kN	Fischer ULTRACUT FBS II M8 X 80 30/15 US TX	5,70	9,00

Istruzioni di montaggio / Assembly instruction



**Fissare il profilo di supporto (Art. Sirio F/ Sirio H) con adeguati tasselli mantenendo un passo di fissaggio di mm 250.**  
Fasten supporting profile (Art. Sirio F / Sirio H) with suitable screw anchor maintaining a fixing pitch of mm 250.



**Assemblare le pinze (art. AC40 / AC41) ed inserirle all'interno del profilo mantenendo un interasse di mm 250.**  
Assemble clamps (art. AC40 / AC41) and insert them inside the profile maintaining a pitch of 250 mm.



**Posizionare la lastra di vetro.**  
Place the glass.



**Tramite le viti inserite nelle pinze, fissare la lastra e regolare l'allineamento.**  
By clamps screws fix the glass and adjust alignment.

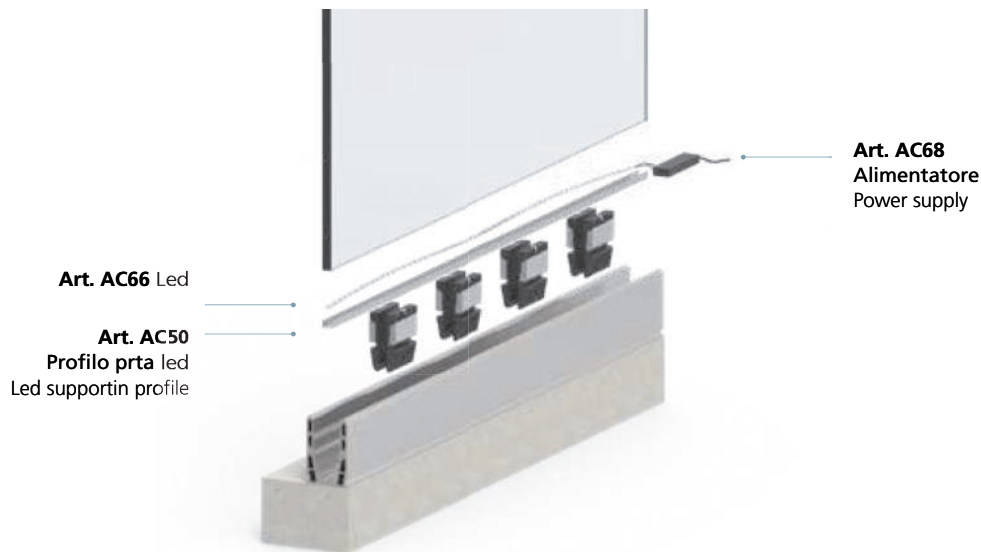


**Installare le cover e le guarnizioni.**  
Install covers and gaskets.

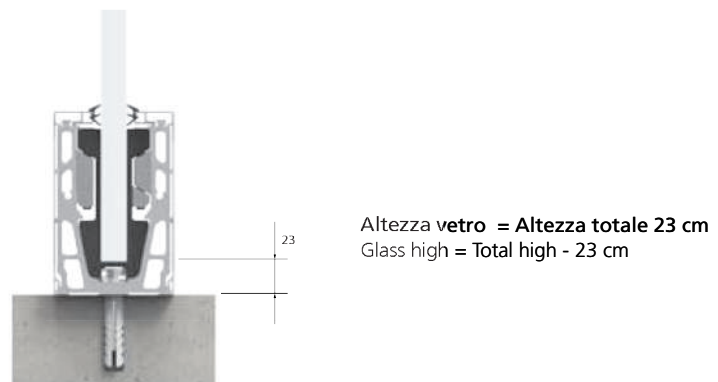


**Installare le guarnizioni vetro - vetro (Art. AC48 / AC49).**  
Install glass-to-glass gaskets (Art. AC48 / AC49).

| Schema installazione Led / Led installation scheme



| Schema calcolo altezza vetro / Glass dimensioning schemedimensioning



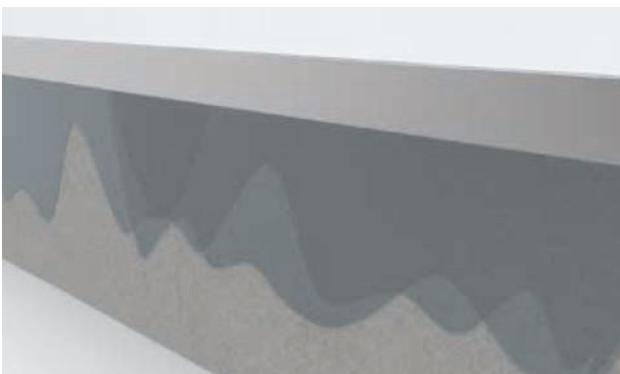
| Drenaggio acque piovane / Rain water drainage

Per consentire il drenaggio delle acque piovane nel caso di terrazzi e balconi esterni consigliamo l'installazione di gocciolatoi classici normalmente utilizzati con i balconi in muratura.

Sconsigliamo di prevedere il drenaggio sotto il profilo in quanto lo scolo dell'acqua sul fronte soletta potrebbe danneggiare la muratura.

In the case of terraces and external balconies we recommend to allow rainwater drainage by installation of classic drips normally used with masonry balconies.

We do not recommend to provide drainage under the profile cause water draining on the slab front could damage the masonry.



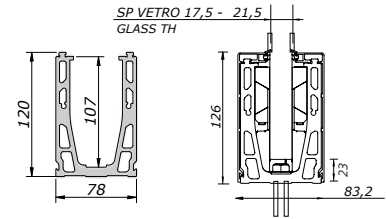
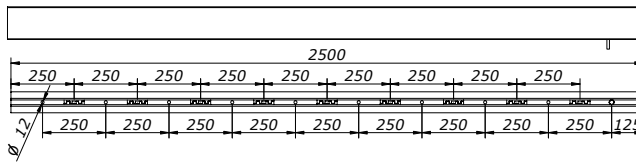
soluzione sconsigliata / unsuitable solution



soluzione CONSIGLIATA / RECOMMENDED solution

**SIRIO F**

portata / load resistance 3 kN/m

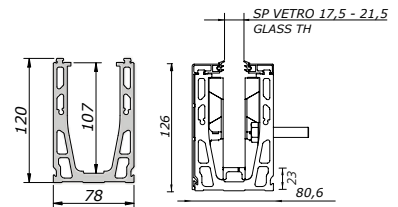
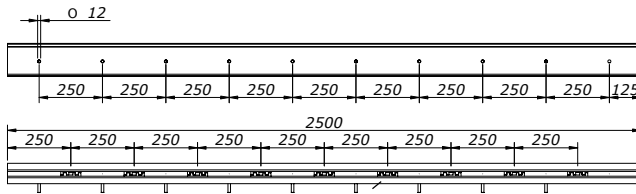


Profilo di supporto pre-forato per fissaggio a pavimento lungh. mm 2500  
U-channel base profile pre-drilled for floor fastening length mm 2500

grezzo / raw	argento / silver	simil inox / stainless steel finish
V-SIRIO-F-G	V-SIRIO-F-A	V-SIRIO-F-I

**SIRIO H**

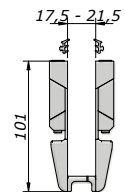
portata / load resistance 3 kN/m



Profilo di supporto pre-forato per fissaggio laterale lungh. mm 2500  
U-channel base profile pre-drilled for sidefixing length mm 2500

grezzo / raw	argento / silver	simil inox / stainless steel finish
V-SIRIO-H-G	V-SIRIO-H-A	V-SIRIO-H-I

**AC 40**

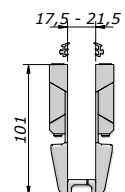


1 pz AC 40 = 10 pinze + 5 m guarnizione  
1 pcs AC 40 = 10 Clamps + 5 m gasket

Set pinze di fissaggio per profilo lungh. 2500 per spessore 8+8 mm  
Clamping set for profile with length 2500 for 8+8 mm glass thickness

per spessore 8+8 mm / for 8+8mm
V-AC-40

**AC 41**

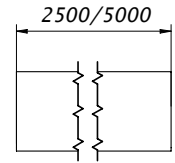
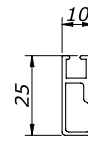


1 pz AC 41 = 10 pinze + 5 m guarnizione  
1 pcs AC 41 = 10 Clamps + 5 m gasket

Set pinze di fissaggio per profilo lungh. 2500 per spessore 10+10 mm  
Clamping set for profile with length 2500 for 10+10 mm glass thickness

per spessore 10+10mm / for 10+10 mm
V-AC-41

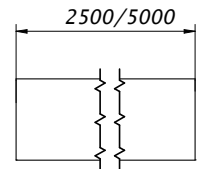
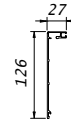
**AC 43**



**Carter di copertura superiore**  
Top cover

lunghezza / length	argento / silver	cromato satinato / chrome mat	altre finiture / other finishes
2500	V-AC-43-A-250	V-AC-43-I-250	a richiesta / on demand
5000	V-AC-43-A-500	V-AC-43-I-500	a richiesta / on demand

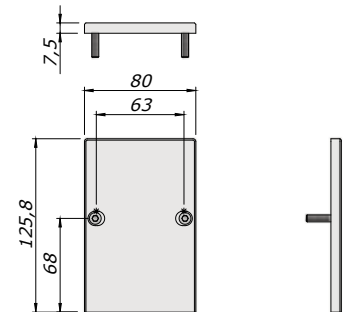
**AC 44**



**Carter di copertura laterale**  
Side cover

lunghezza / length	argento / silver	cromato satinato / chrome mat	altre finiture / other finishes
2500	V-AC-44-A-250	V-AC-44-I-250	a richiesta / on demand
5000	V-AC-44-A-500	V-AC-44-I-500	a richiesta / on demand

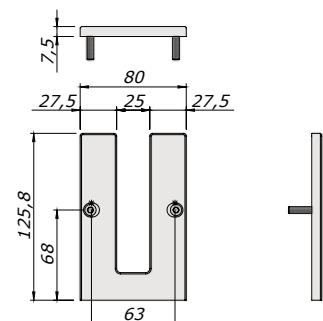
**AC 45**



**Tappo laterale**  
Lateral cap

argento / silver	cromato satinato / chrome mat
V-AC-45-A	V-AC-45-I

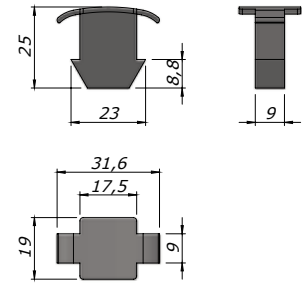
**AC 46**



**Tappo laterale a "U"**  
"U" lateral cap

argento / silver	cromato satinato / chrome mat
V-AC-46-A	V-AC-46-I

**AC 48**

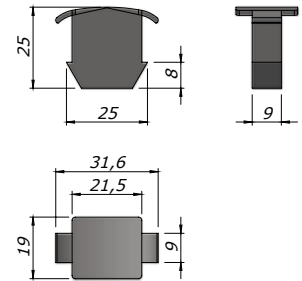


Guarnizione vetro-vetro sp. 8+8, per fughe da 9 a 19 mm  
8+8 Glass to glass gasket for gap from 9 to 19 mm

per spessore 8+8 mm/ For 8+8mm

V-AC-48

**AC 49**

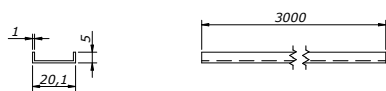


Guarnizione vetro-vetro sp. 10+10 per fughe da 9 a 19 mm  
10+10 Glass to glass gasket for gap from 9 to 19 mm

per spessore 10+10 mm / for 10+10 mm glassp

V-AC-49

**AC 50**



Profilo porta led, lungh. 3000 mm  
Led supporting profile, length 3000 mm

V-AC-50

**AC 66**



Led Multicolor 4000k, 15W/M, lungh. 5000 mm  
Multicolor led strip 4000k, 15W/M, length 5000 mm

V-AC-66

**AC 67**



Alimentatore (utilizzabile per strisce led fino a 10m)  
Power supply (right up to 10 Led strip)

V-AC-67

**AC 68**



Controller RGB  
controller RGB

V-AC-68

**ACCESSORI PER PARAPETTI**
**BALUSTRADES ACCESSORIES**
**esempio di composizione prezzo profilo Sirio / example of price composition for Sirio profile**

 articolo  
 article

 codice  
 code

**kit 1**

Componenti / Components	
No. 01	Art. SIRIO F - G
No. 01	Art. AC 40 / 41
No. 02	Art. AC 44 - 250
Prezzo Totale / Total Price	

 Prezzo profilo con fissaggio sopra pavimento  
 Price for profile with installation above the floor

**kit 2**

Componenti / Components	
No. 01	Art. SIRIO F - G
No. 01	Art. AC 40 / 41
No. 02	Art. AC 43 - 250
Prezzo Totale / Total Price	

 Prezzo profilo con fissaggio incassato pavimento  
 Price for profile with embedded in the floor installation

**kit 3**

Componenti / Components	
No. 01	Art. SIRIO H - G
No. 01	Art. AC 40 / 41
No. 01	Art. AC 43 - 250
No. 01	Art. AC 44 - 250
Prezzo Totale / Total Price	

 Prezzo profilo con fissaggio laterale (lato inferiore NON a vista)  
 Price for profile with lateral fixing installation (bottom side NOT at sight)

**kit 4**

Componenti / Components	
No. 01	Art. SIRIO H - G
No. 01	Art. AC 40 / 41
No. 01	Art. AC 43 - 250
No. 01	Art. AC 44 - 250
Prezzo Totale / Total Price	

 Prezzo profilo con fissaggio laterale (lato inferiore a vista)  
 Price for profile with lateral fixing installation (bottom side at sight)